

From the following documents you will be able to obtain the technical information necessary for the graphic design of each single printing component. The layout you send to us is expected to be ready for direct processing without any further corrections.

A delivery of data that is not according our specifications can delay your order and cause correction costs. By paying attention to these production guidelines you secure the optimum possible results and simplify our co-operation during the whole production.

We can accept data from the following layout/image editing software and graphic programs:

- **Adobe® InDesign**
- **Adobe® Illustrator**
- **Adobe® PhotoShop**
- or printable pdfs as **Adobe® Acrobat PDF**.

For each one we work with the currently available program versions Mac OSX CS5 and CS6 and Adobe® Acrobat 9.

We always need from you:

- A montage of your data in a layout program according the current specifications
- All fonts that are used in the document as much as far as they are not embedded or have been converted.
- All used images with a minimum resolution of:
 - line drawings: 1200 dpi
 - gray-scale/colour images: 300 dpi
 - maximum colour application: **350%** for DPac's, booklets, covercards, inlays
400% for cd-labels in offsetprinting
- Colourmode: CMYK - Pantone Solid Coated – HKS (-K)
- Colourprofile: **ISOcoated_v2_eci.icc / PSO_Uncoated_ISO12647_eci.icc** (www.eci.org)

When delivering RGB Image data: a colour variation to the original image occurs during the necessary conversion into the CMYK range. Therefore please save colour images in CMYK.

TIFF: Save TIFF Images data without compression

EPS: Binary code

JPEG : Please save with maximum quality in colourmode CMYK

Please notice that Photoshop images must be mounted in an appropriate layout program. (In case we receive only Photoshop-files, we have to import those files into a layout program causing extra costs for you.) Take care that the positioning of your image data in the appropriate layout program has been done by paying attention to the necessary bleed. The size of your montage page must be identical to the size of the format which has to be printed. Therefore mount your data without any additional white space or crop- or registermarks. **Printing area + bleed = printed size = PDF-size**. Upon request we can send you templates in various layout programs.

Line widths

All line widths must not lie under a minimum size:

- Positive print min. **0,10 mm**
- Negative print min. **0,15 mm**

Font sizes

Font size must not fall short of a minimum size.

- Positive print min. 4 pt
- Negative print min. 5 pt

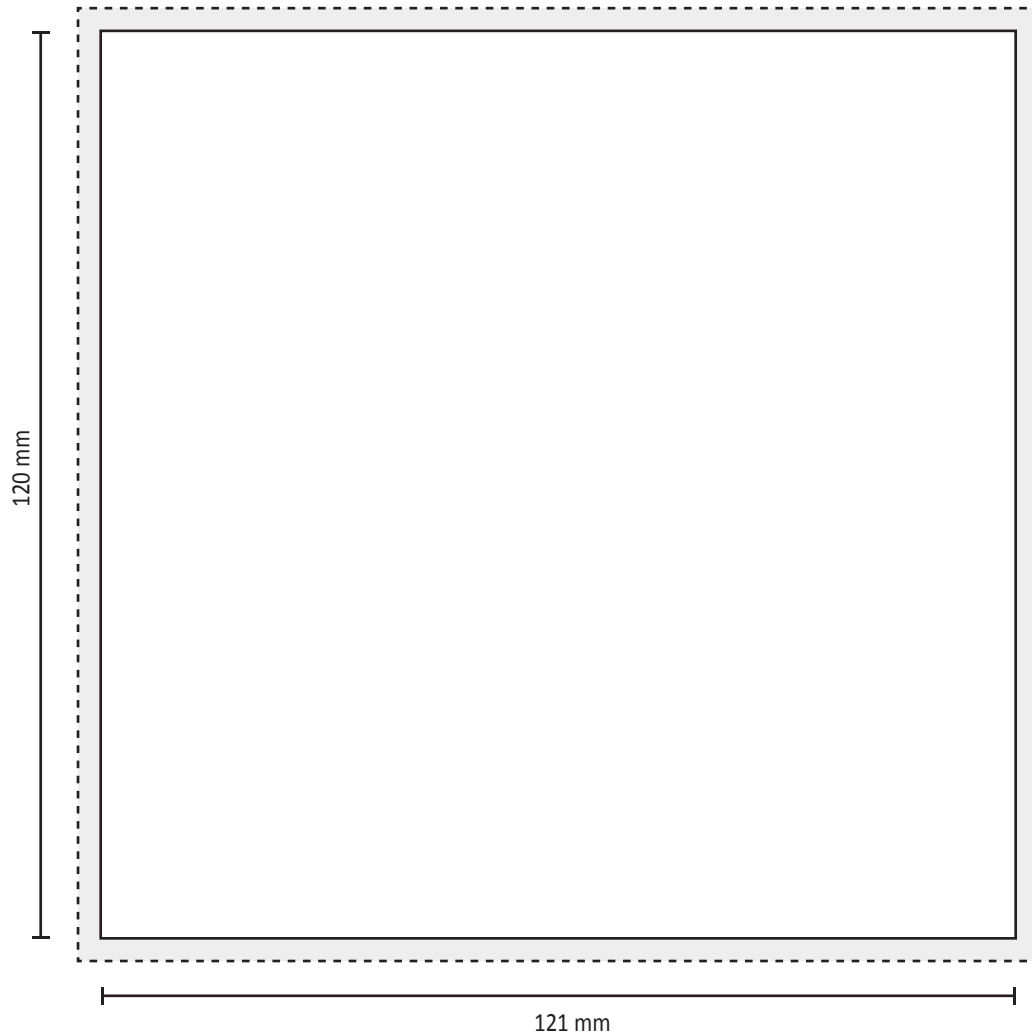
Please note that with the use of serifs fonts and with particular font incisions, you must stay within the minimum line widths! Please only use postscript compatible font types.

For example, if we are printing the CD label using silk screen printing, the printing can only be successful in a maximum of 40's screen. This rough screen means beside other things that small fonts which are possibly made up of more than one scale colour may be hard to read. For that reason we recommend that CD label printing files should generally be arranged in special/spot colours (Pantone Solid Coated or HKS). But it is also possible to print in 4c offset in 70's screen. This is recommended for 4c images! Generally we produce your printing product by **CTP** (computer to plate) and don't produce films anymore. That is why it is absolutely necessary that you exactly stick to the specification of the relevant pressing plant. Our Graphics department will help you with any questions as refers this mater.

In case you deliver compressed files, or any interventions are necessary to develop the data for the production, or when delivering incomplete files: the additional working time or caused extra costs will be charged by the appropriate hourly rate.

In normal cases we receive from you the correct document according the specifications. After receiving your data we will check if it has been arranged according the specifications and generate high resolution PDF documents. These PDF's or the pdfs you send us will be transfered to the relevant pressing plant then. Should we discover any problems that need to be solved during this process, you will receive a response. At this point you will have the possibility to resend the files corrected by yourself or to request that we do the necessary adaptations (if possible). The extra expenditure of time will be shown separately in the invoice/bill then. Sending printing files **repeatedly** to the printing agencies is connected with extra work for them and consequently with extra costs for you.

In general the printing will be done by an **industrial printing process** connected with the usual color permissible limits according **European ISO standard**. To guarantee a certain color accuracy it's necessary to sent digital proofs that follow the present valid FOGRA-standards/settings. It's possible that we do these digital proofs for you.



Format: 121 x 120 mm

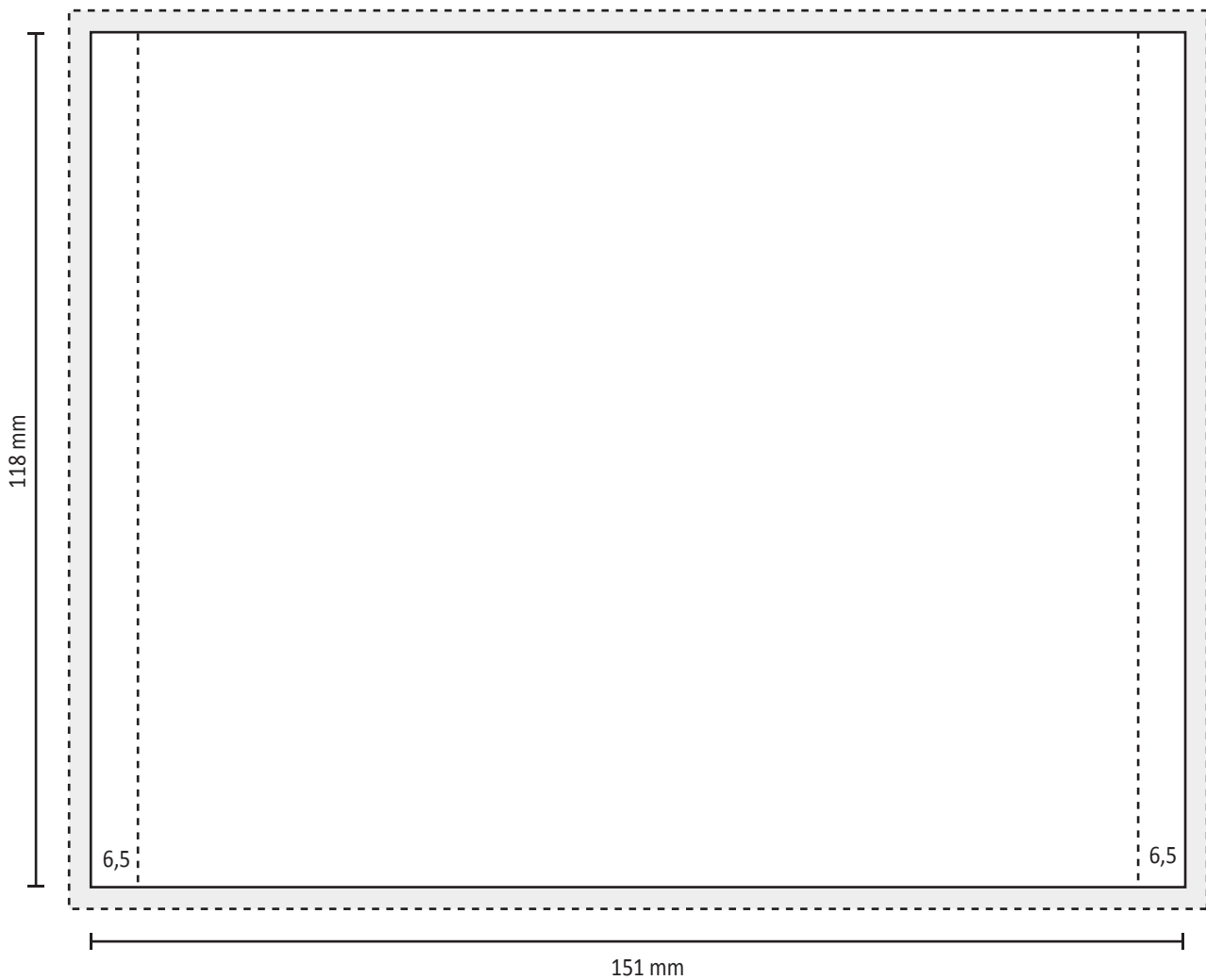
Pages: 1-2

Bleed: 3 mm

Document size: 121 x 120 mm

Document size incl. bleed: 127 x 126 mm

PDF measures: 127 x 126 mm



Format: 151 x 118 mm

Pages: 1-2

Bleed: 3 mm

Coordinations position CD tray: $x = 22 \text{ mm}$ $y = 0,5 \text{ mm} - \emptyset 117 \text{ mm}$

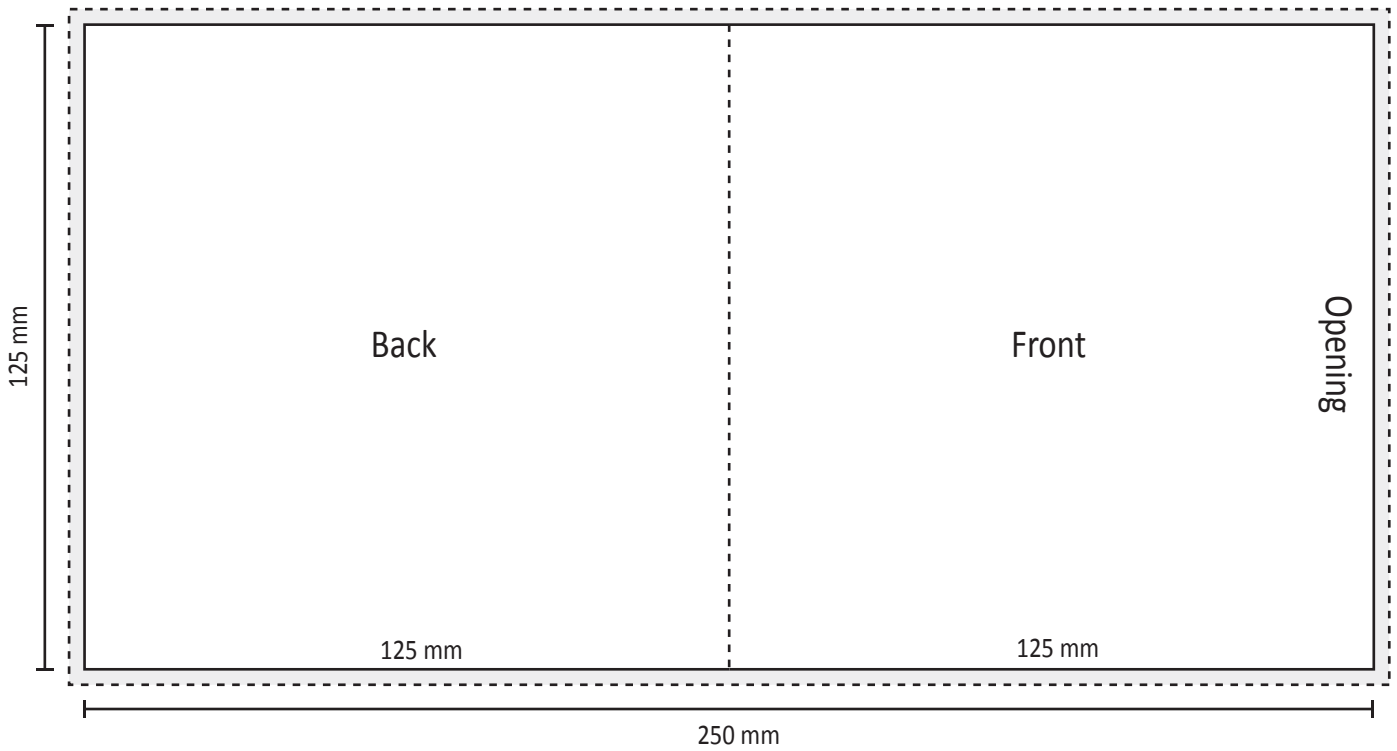
Document size: 151 x 118 mm

Document size incl. bleed: 157 x 124 mm

PDF measures: 157 x 124 mm

CD Specifications
CD cardboard wallet 1
Opening beside

handle with care



Format: 125 x 125 mm

Bleed: 3 mm

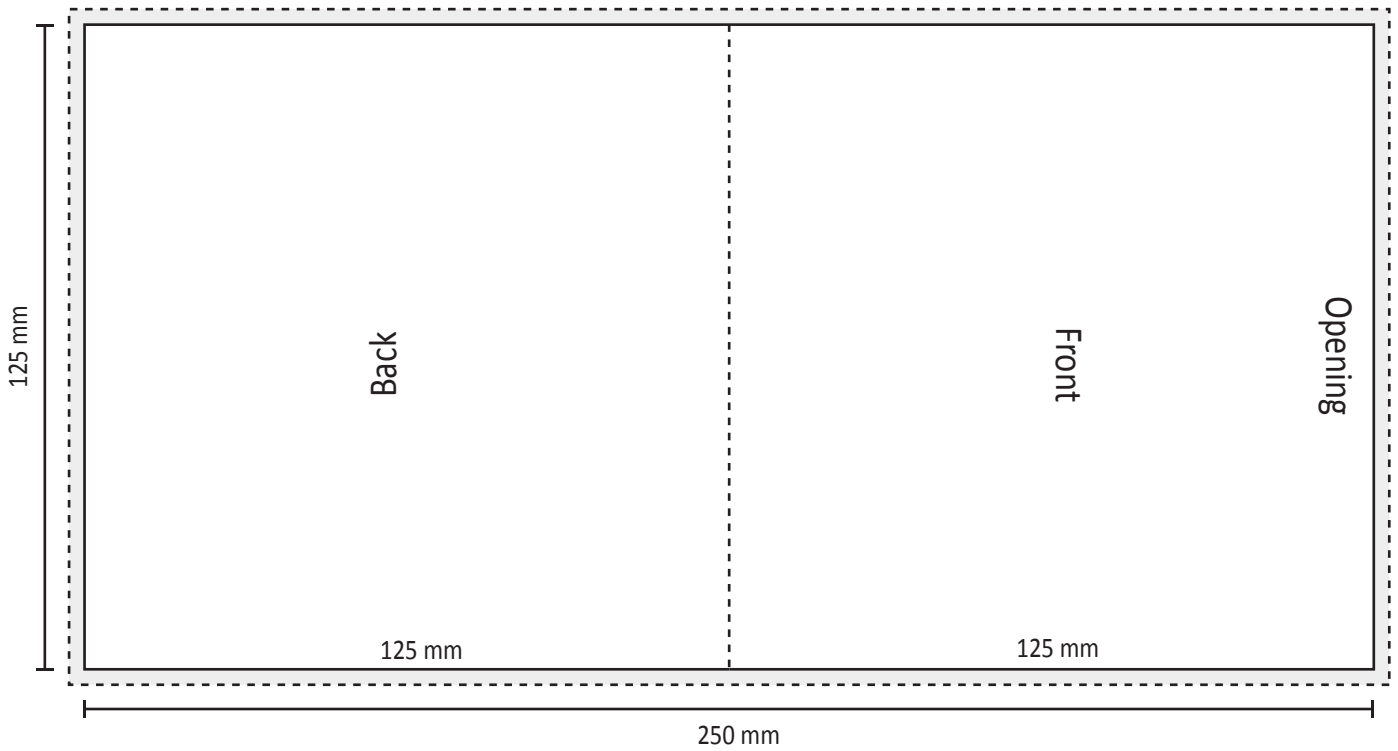
Document size: 250 x 125 mm

Document size incl. bleed: 256 x 131 mm

PDF measures: 256 x 131 mm

CD Specifications
CD cardboard wallet 2
Opening on top

handle with care

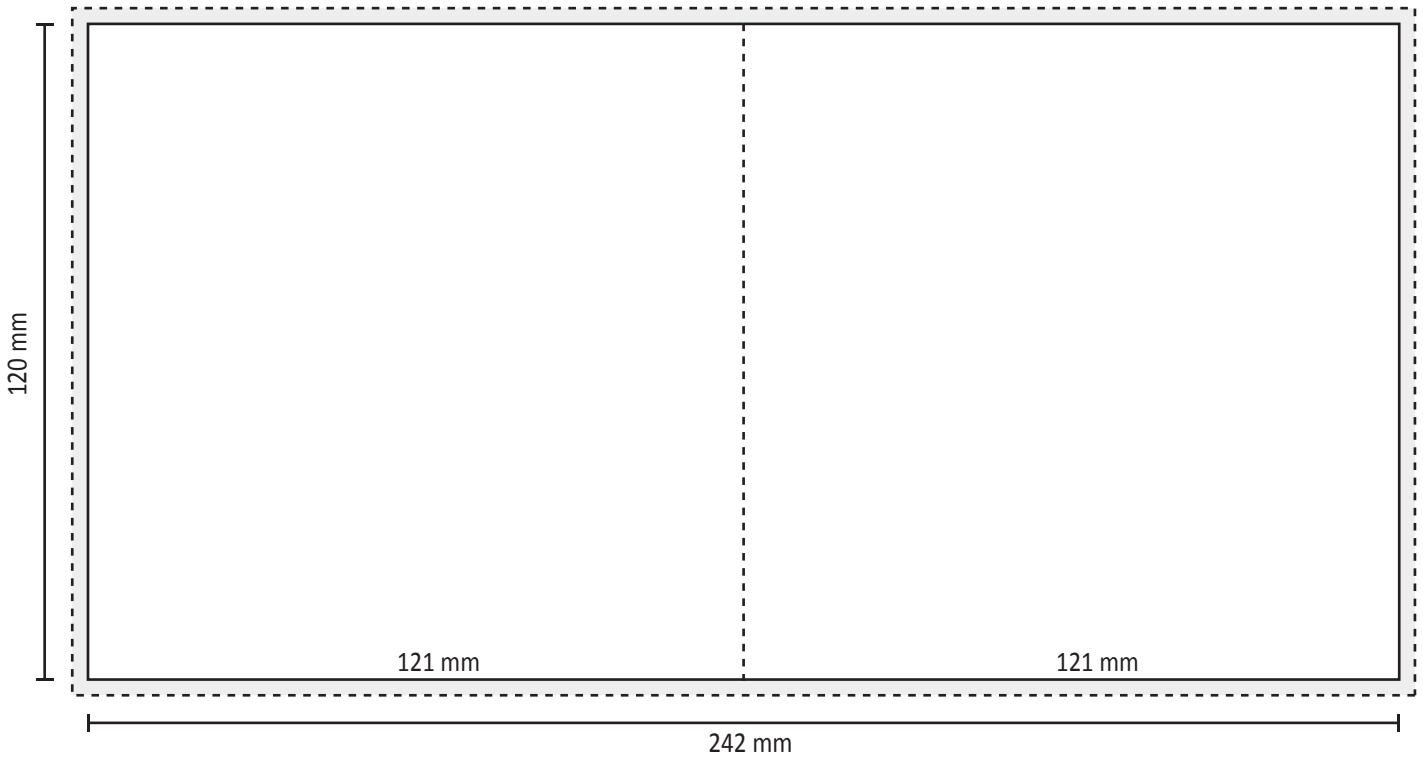


Format: 125 x 125 mm
Bleed: 3 mm

Document size: 250 x 125 mm
Document size incl. bleed: 256 x 131 mm
PDF measures: 256 x 131 mm

CD Specifications
CD booklet 121 x 120 mm
CD booklet for Jewelcase/DPac

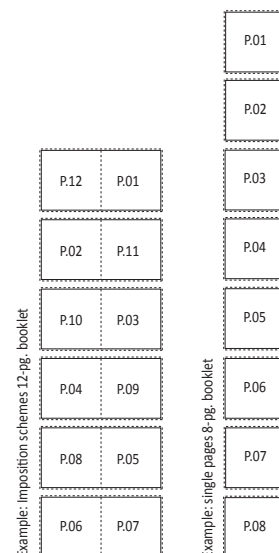
handle with care



Format: 121 x 120 mm
Pages: 4-36
Bleed: 3 mm

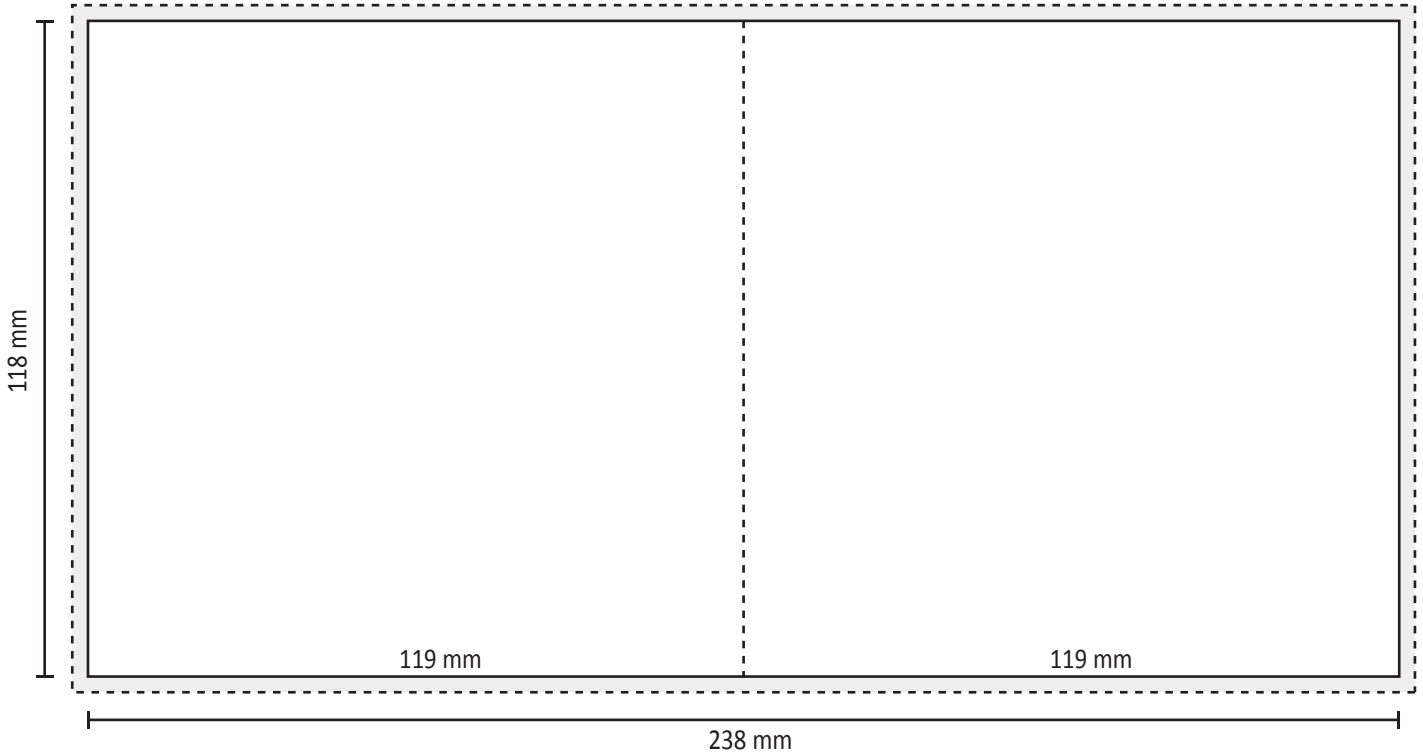
Document size double pages imposed: 242 x 120 mm
Document size incl. bleed: 248 x 126 mm
PDF measures double pages imposed: 248 x 126 mm

Document size single pages: 121 x 120 mm
Document size single pages incl. bleed: 127 x 126 mm
PDF measures single pages: 127 x 126 mm



CD Specifications
CD booklet 119 x 118 mm
CD booklet for SleevePac

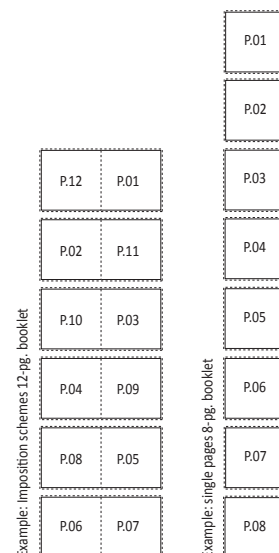
handle with care

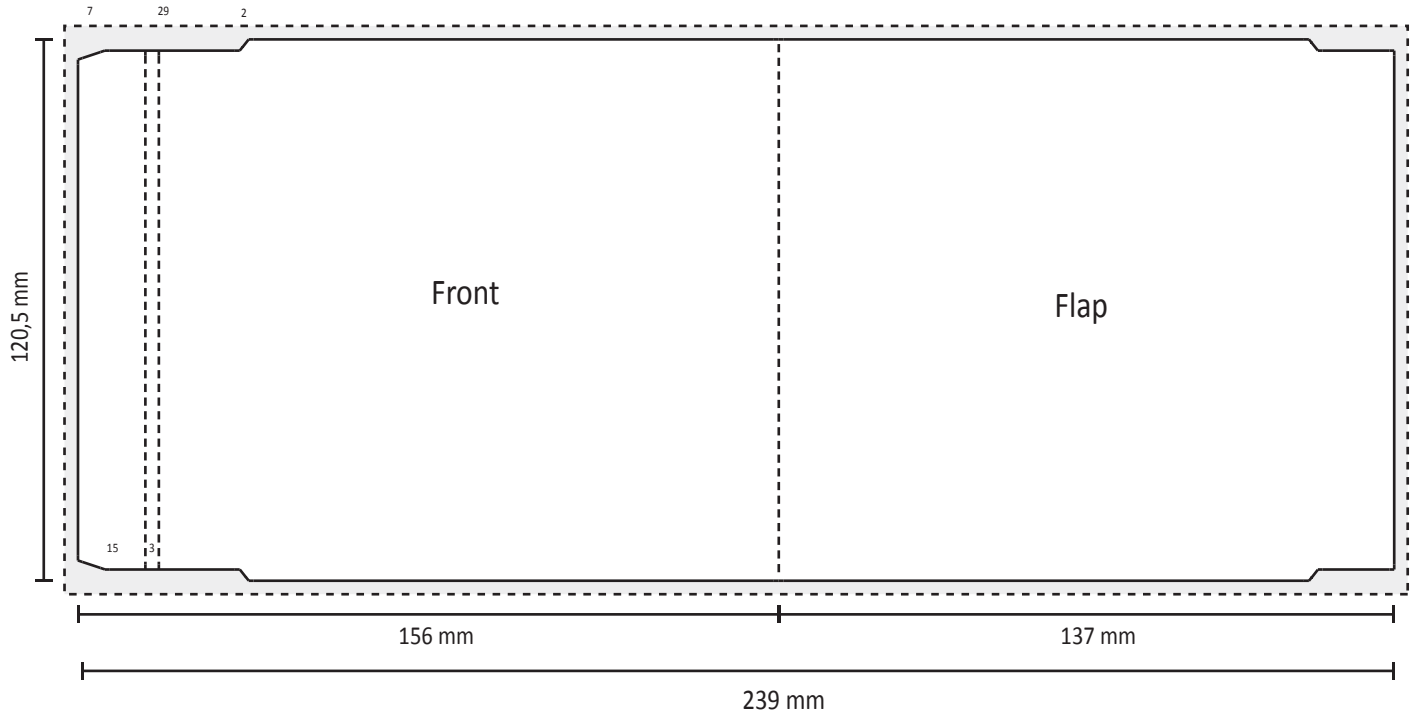


Format: 119 x 118 mm
Pages: 4-36
Bleed: 3 mm

Document size double pages imposed: 238 x 118 mm
Document size incl. bleed: 244 x 124 mm
PDF measures double pages imposed: 244 x 124 mm

Document size single pages: 119 x 118 mm
Document size single pages incl. bleed: 125 x 124 mm
PDF measures single pages: 125 x 124 mm





Format: 293 x 120,5 mm

Pages: 1-2

Bleed: 3 mm

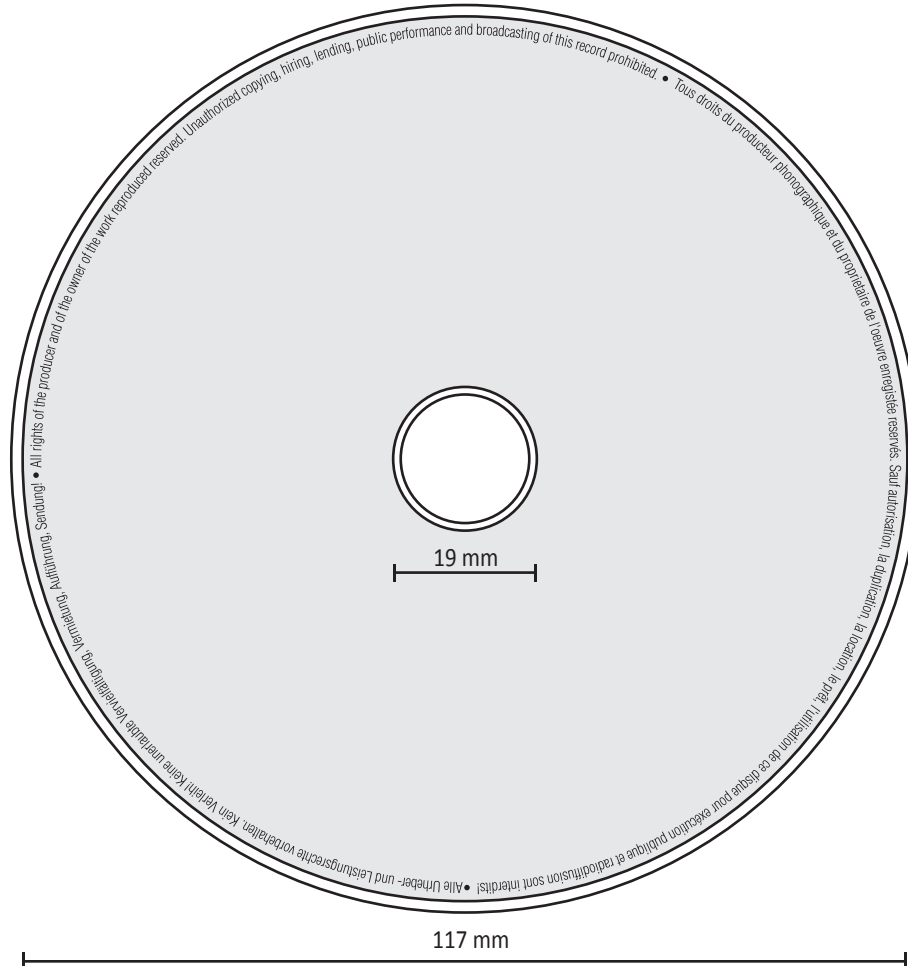
Document size: 293 x 120,5 mm

Document size incl. bleed: 299 x 126,5 mm

PDF measures: 299 x 126,5 mm

CD Specifications
CD Body DB. FF19
Silkscreen/Offsetprint

handle with care



Format: 117 x 117 mm
Bleed: 0 mm

Printing Area: 19 - 117 mm – please do not arrange the inner circles/printing area
Document size: 117 x 117 mm
PDF measures: 117 x 117 mm

CD Specifications
CD Body DB. 3
Silkscreen/Offsetprint

handle with 



Format: 117 x 117 mm
Bleed: 0 mm

Printing Area: 26 - 117 mm – please do not arrange the inner circles/printing area
Document size: 117 x 117 mm
PDF measures: 117 x 117 mm

CD Specifications
CD Body DB. 2 – DB. 1
Silkscreen/Offsetprint

handle with care



Format: 117 x 117 mm

Bleed: 0 mm

Printing Area DB. 2: 36 - 117 mm – please do not arrange the inner circles/printing area

Printing Area DB. 1: 46 - 117 mm – please do not arrange the inner circles/printing area

Documentsize: 117 x 117 mm

PDF measures: 117 x 117 mm