

## LP Specifications

From the following documents you will be able to obtain the technical information necessary for the graphic design of each single printing component. The layout you send to us is expected to be ready for direct processing without any further corrections.

A delivery of data that is not according our specifications can delay your order and cause correction costs. By paying attention to these production guidelines you secure the optimum possible results and simplify our co-operation during the whole production.

We can accept data from the following layout/image editing software and graphic programs:

- **Adobe®InDesign**
- **Adobe®Illustrator**
- or printable pdfs as **Adobe®Acrobat PDF.**

For each one we work with the currently available program versions Mac OSX CS5 and CS6 and Adobe® Acrobat 9.

We always need from you:

- A montage of your data in a layout program according the current specifications
- All fonts that are used in the document as much as far as they are not embedded or have been converted.
- All used images with a minimum resolution of:
  - line drawings: 1200 dpi
  - gray-scale/colour images: 300 dpi
  - maximum colour application: **300%** for Sleeves, discobags, inserts..  
**300%** for vinyl-labels in offsetprinting
- Colourmode: CMYK – Pantone Solid Coated – HKS (-K)
- Colourprofile: PSO-coated\_v3\_eci / PSO-Uncoated\_V3\_eci ([www.eci.org](http://www.eci.org))

When delivering RGB Image data: a colour variation to the original image occurs during the necessary conversion into the CMYK range. Therefore please save colour images in CMYK.

TIFF: Save TIFF Images data without compression

EPS: Binary code

JPEG : Please save with maximum quality in colourmode CMYK

Please notice that Photoshop images must be mounted in an appropriate layout program. (In case we receive only Photoshop-files, we have to import those files into a layout program causing extra costs for you.) Take care that the positioning of your image data in the appropriate layout program has been done by paying attention to the necessary bleed. The size of your montage page must be identical to the size of the format which has to be printed. Therefore mount your data without any additional white space, crop- or registermarks. **Printing area + bleed = printed size = PDF-size.** Upon request we can send you templates in various layout programs.

## LP Specifications

### Line widths

All line widths must not lie under a minimum size:

- Positive print min. **0,10 mm**
- Negative print min. **0,15 mm**

### Font sizes

Font size must not fall short of a minimum size.

- Positive print min. 4 pt
- Negative print min. 5 pt

Please note that with the use of serifs fonts and with particular font incisions, you must stay within the minimum line widths! Please only use postscript compatible font types.

Take for instance in this case the printing of the 12 inch Label. Here it would be necessary to layout a format of 100 x 100 mm for each label side. When generating a PDF, it should be noted that the PDF format should match the actual format including the bleed. Therefore there should be no registration- or cropmarks at all. Removal of these would lead to additional time and extra costs. Please pay attention to use at least 1,5 mm distance to the die-cutting line for all relevant texts, to avoid that they could be cut because of productional matters.

Generally we produce your printed mater by **CTP** (computer to plate) and don't produce films anymore. That is why it is absolutely necessary that you exactly stick to the specification of the relevant pressing plant. Our Graphics department will help you with any questions as refers this mater.

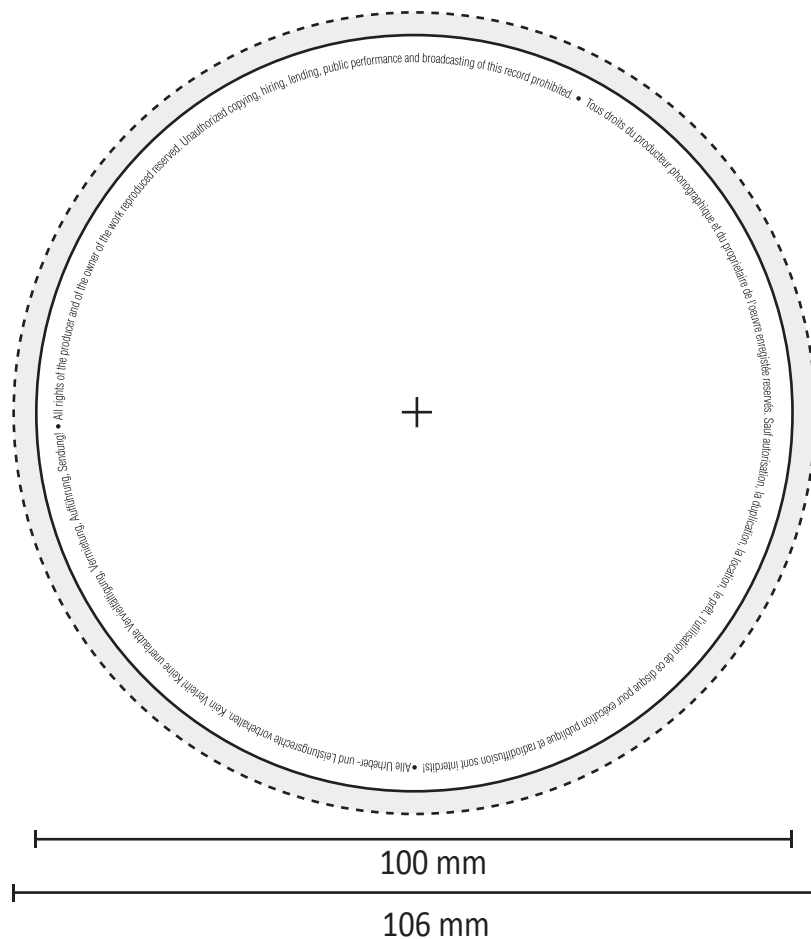
In case you deliver compressed files, or any interventions are necessary to develop the data for the production, or when delivering incomplete files: the additional working time or caused extra costs will be charged by the appropriate hourly rate.

In normal cases we receive from you the correct document according the specifications. After receiving your data we will check if it has been arranged according the specifications and generate high resolution PDF documents. These PDF's or the pdfs you send us will be transfered to the relevant pressing plant then. Should we discover any problems that need to be solved during this process, you will receive a response. At this point you will have the possibility to resend the files corrected by yourself or to request that we do the necessary adaptions (if possible). The extra expenditure of time will be shown separately in the invoice/bill then. Sending printing files **repeatedly** to the printing agencies is connected with extra work for them and consequently with extra costs for you.

In general the printing will be done by an **industrial printing process** connected with the usual color permissible limits according **european ISO standard**. To guarantee a certain colour accuracy it's necessary to sent digital proofs that follow the present valid FOGRA-standards/settings. It's possible that we do these digital proofs for you.

## LP Specifications

### LP labels 10/12"



Format: 100 x 100 mm

Pages: 2

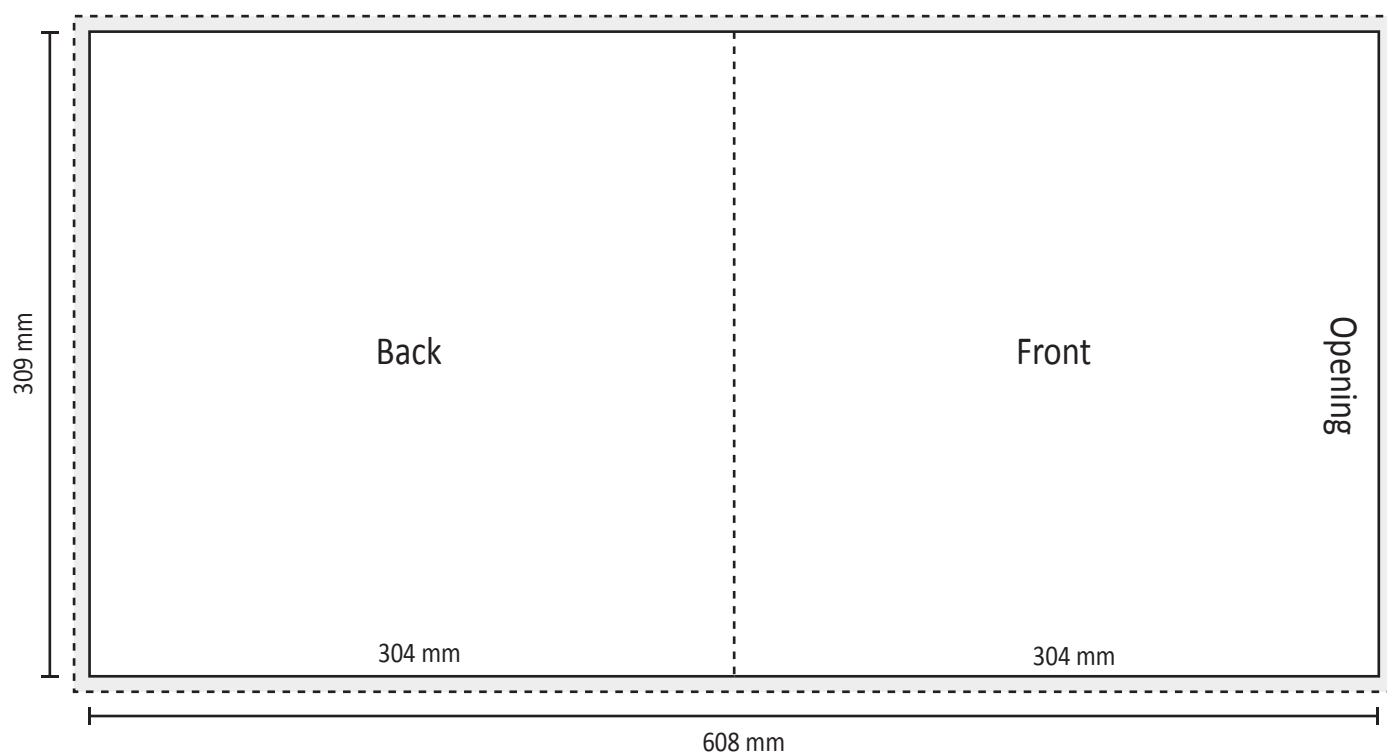
Bleed: 3 mm

Document size: 100 x 100 mm

Document size incl. bleed: 106 x 106 mm

PDF measures: 106 x 106 mm

LP Specifications  
LP innersleeve 1  
Opening beside



Format: 304 x 309 mm

Pages: 1

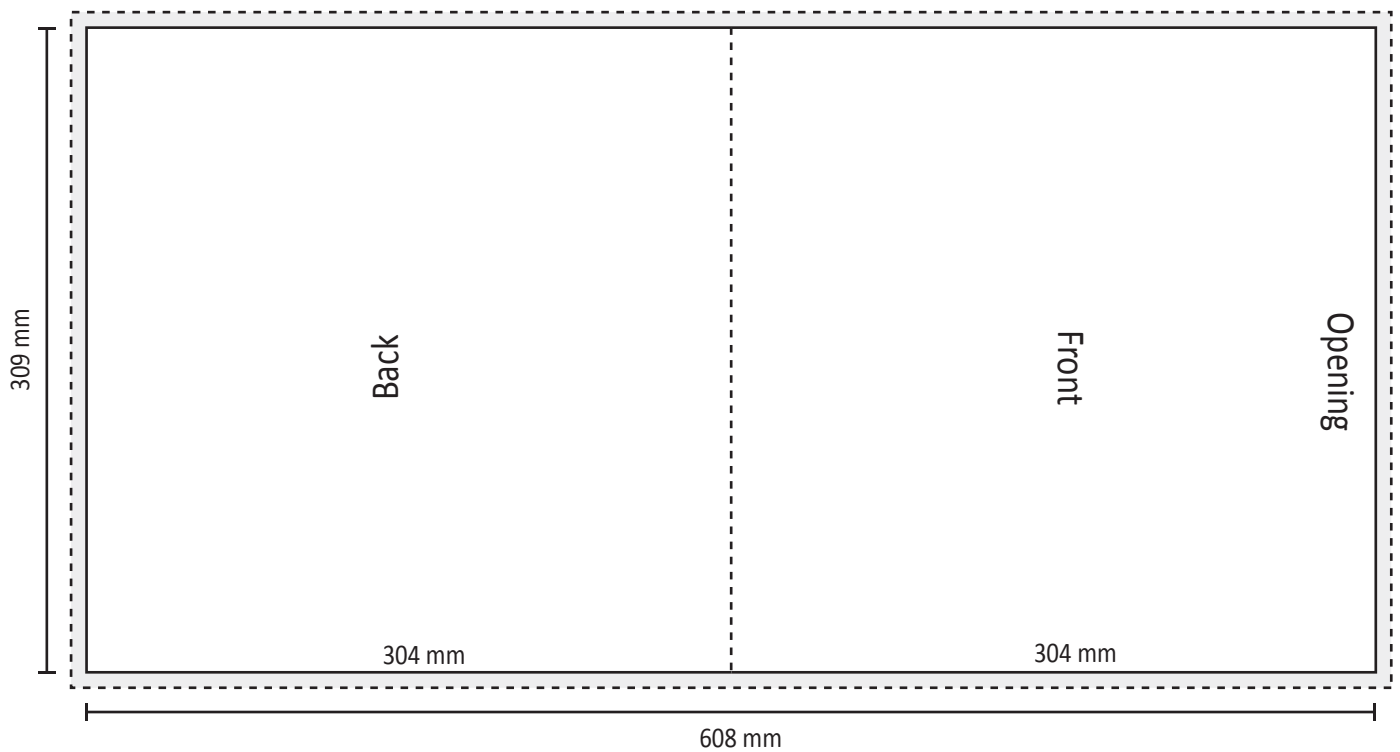
Bleed: 3 mm

Document size: 608 x 309 mm

Document size incl. bleed: 614 x 315 mm

PDF measures: 614 x 315 mm

LP Specifications  
LP innersleeve 2  
Opening on top



Format: 304 x 309 mm

Pages: 1

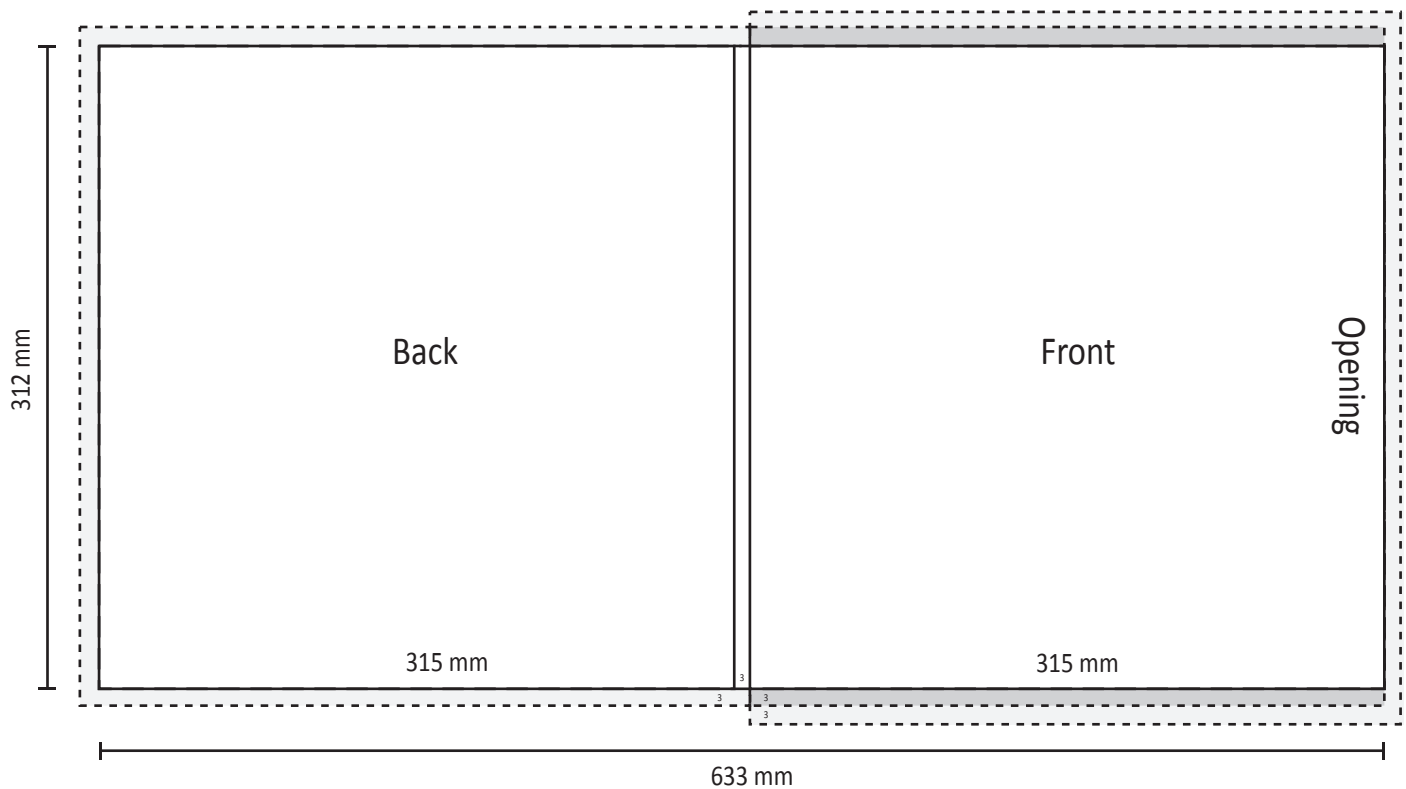
Bleed: 3 mm

Document size: 608 x 309 mm

Document size incl. bleed: 614 x 315 mm

PDF measures: 614 x 315 mm

LP Specifications  
LP sleeve with 3 mm spine



Format: 315 x 312 mm

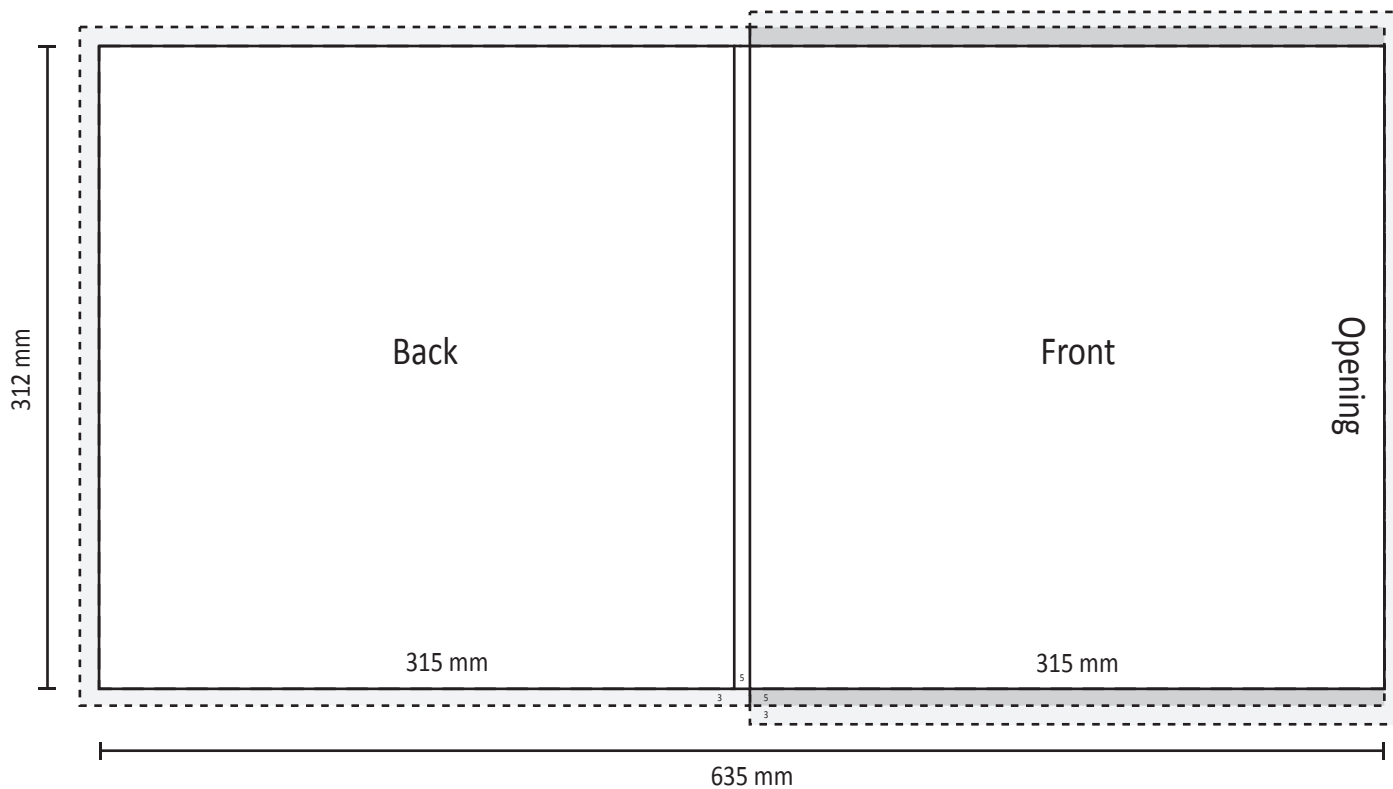
Bleed: 3 mm

Document size: 633 x 318 mm

Document size incl. bleed: 639 x 324 mm

PDF measures: 639 x 324 mm

LP Specifications  
LP sleeve with 5 mm spine



Format: 315 x 312 mm

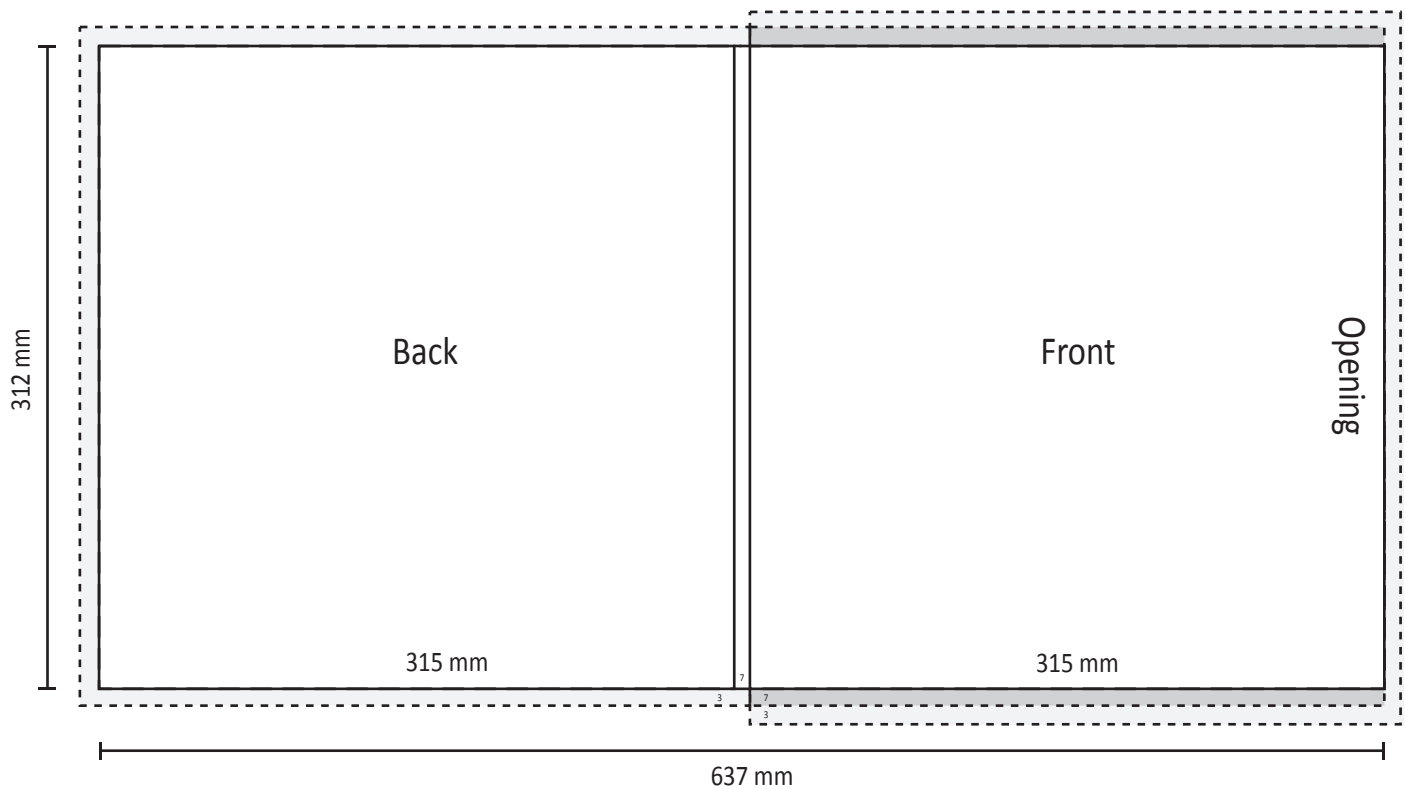
Bleed: 3 mm

Document size: 635 x 322 mm

Document size incl. bleed: 641 x 328 mm

PDF measures: 641 x 328 mm

LP Specifications  
LP sleeve with 7 mm spine



Format: 315 x 312 mm

Bleed: 3 mm

Document size: 637 x 326 mm

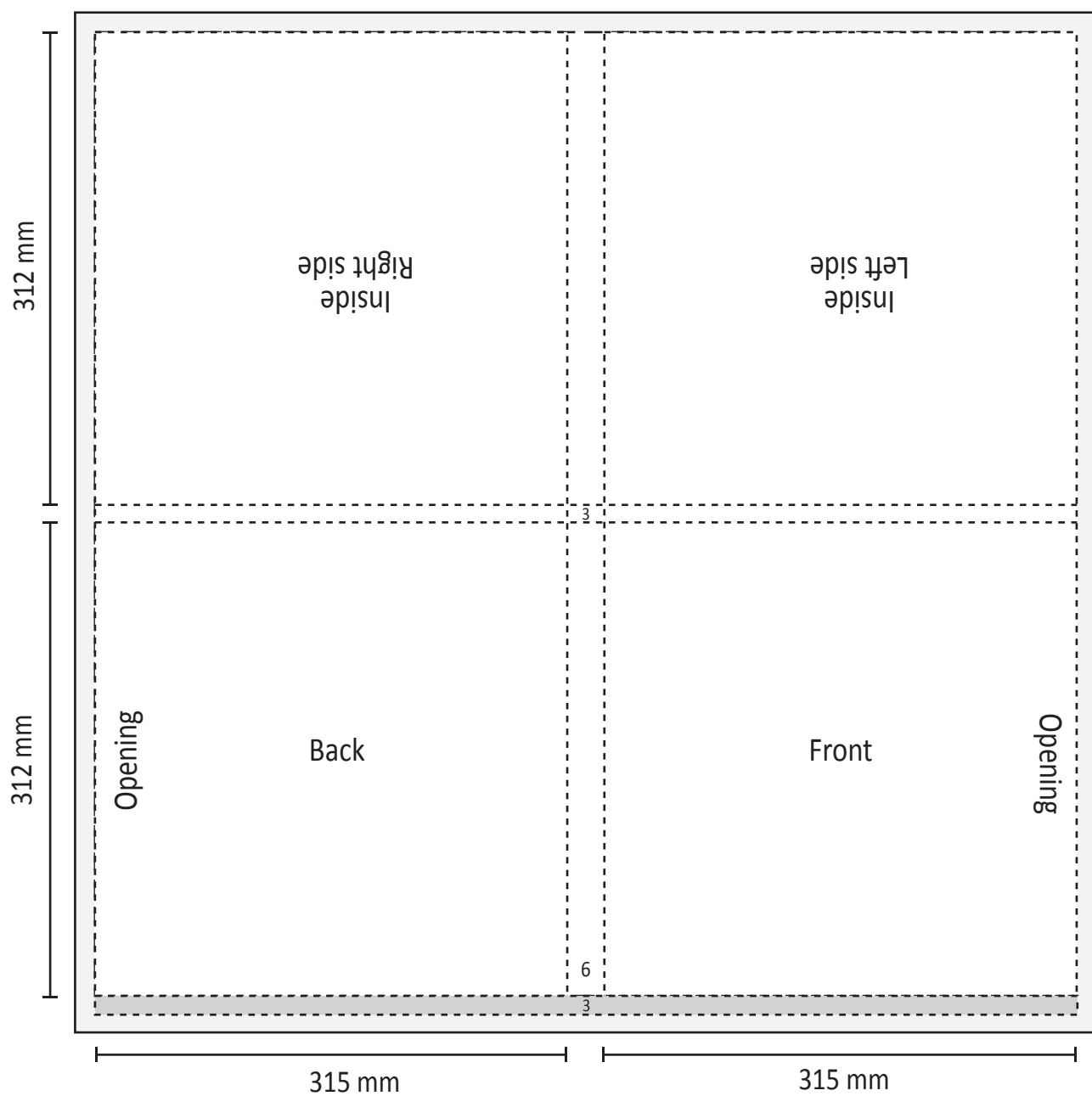
Document size incl. bleed: 643 x 332 mm

PDF measures: 643 x 332 mm



## LP Specifications

LP gatefold-sleeve with 6 mm spine



Format: 315 x 312 mm

Pages: 1

Bleed: 3 mm

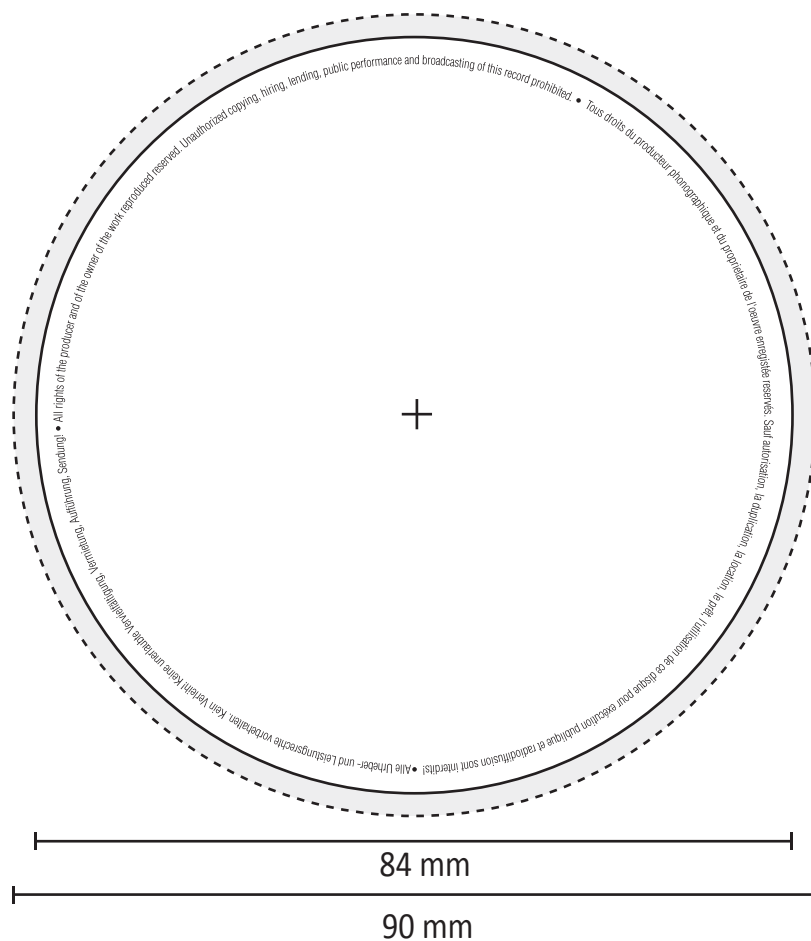
Document size: 636 x 630 mm

Document size incl. bleed: 642 x 636 mm

PDF measures: 642 x 636 mm

## LP Specifications

### LP labels 7"



Format: 84 x 84 mm

Pages: 2

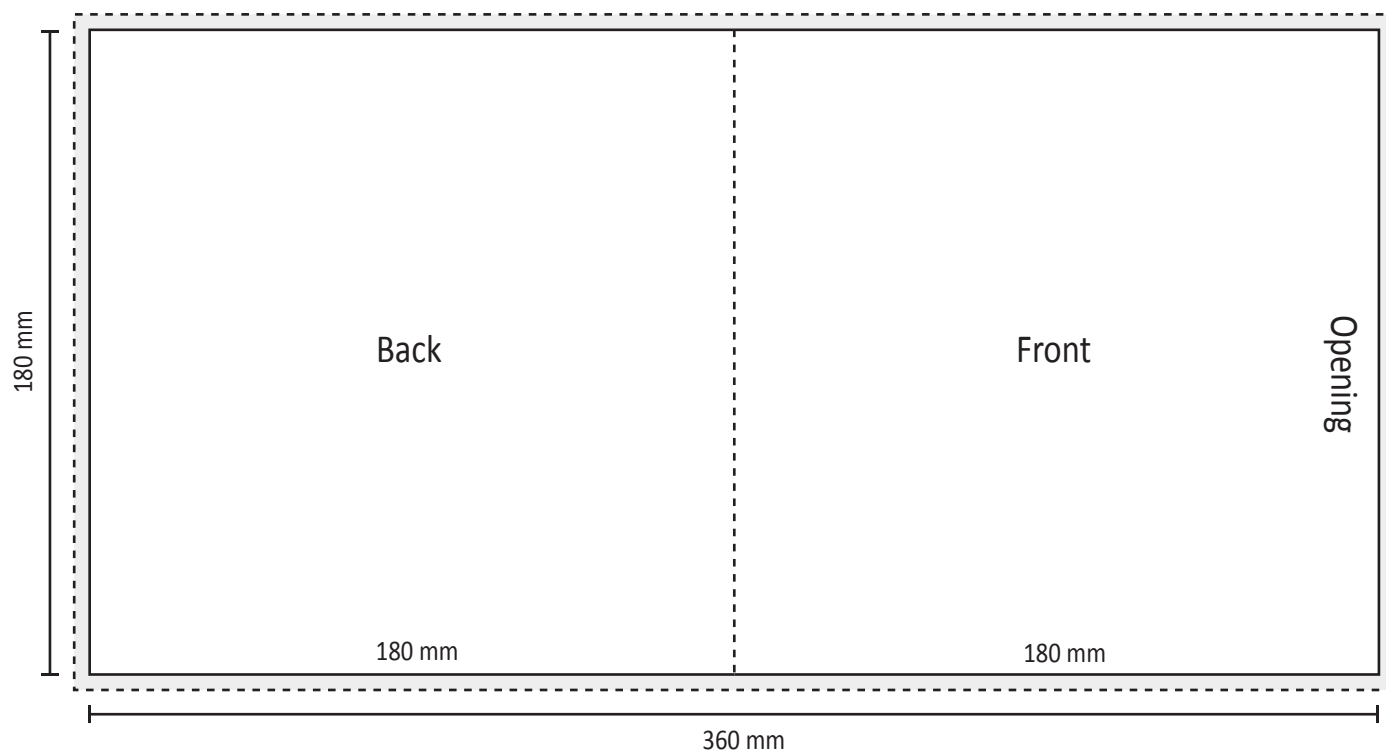
Bleed: 3 mm

Document size: 84 x 84 mm

Document size incl. bleed: 90 x 90 mm

PDF measures: 90 x 90 mm

LP Specifications  
LP 7" sleeve 275g  
Opening beside



Format: 180 x 180 mm

Pages: 1

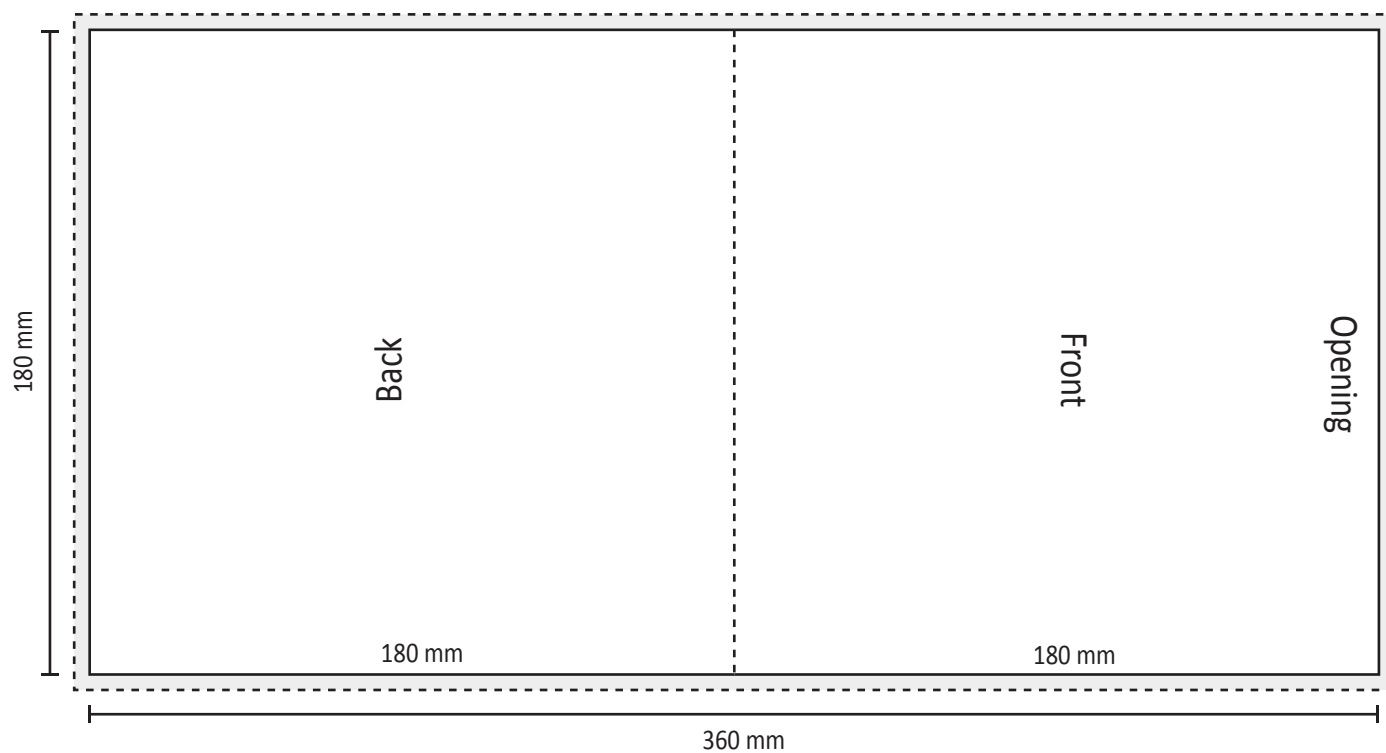
Bleed: 3 mm

Document size: 360 x 180 mm

Document size incl. bleed: 366 x 186 mm

PDF measures: 366 x 186 mm

LP Specifications  
LP 7" sleeve 275g  
Opening on top



Format: 180 x 180 mm

Pages: 1

Bleed: 3 mm

Document size: 360 x 180 mm

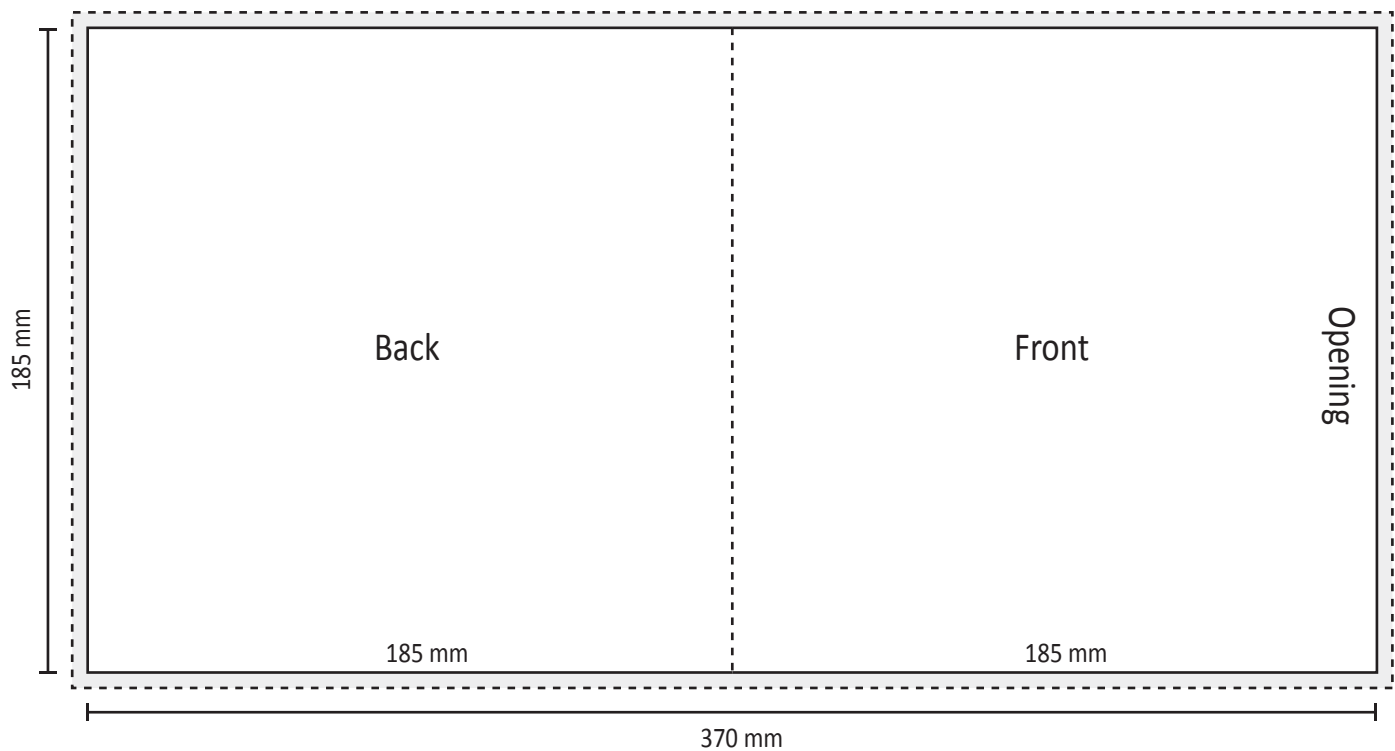
Document size incl. bleed: 366 x 186 mm

PDF measures: 366 x 186 mm

## LP Specifications

LP 7" sleeve 275g incl. innersleeve

Opening beside



Format: 185 x 185 mm

Pages: 1

Bleed: 3 mm

Document size: 370 x 185 mm

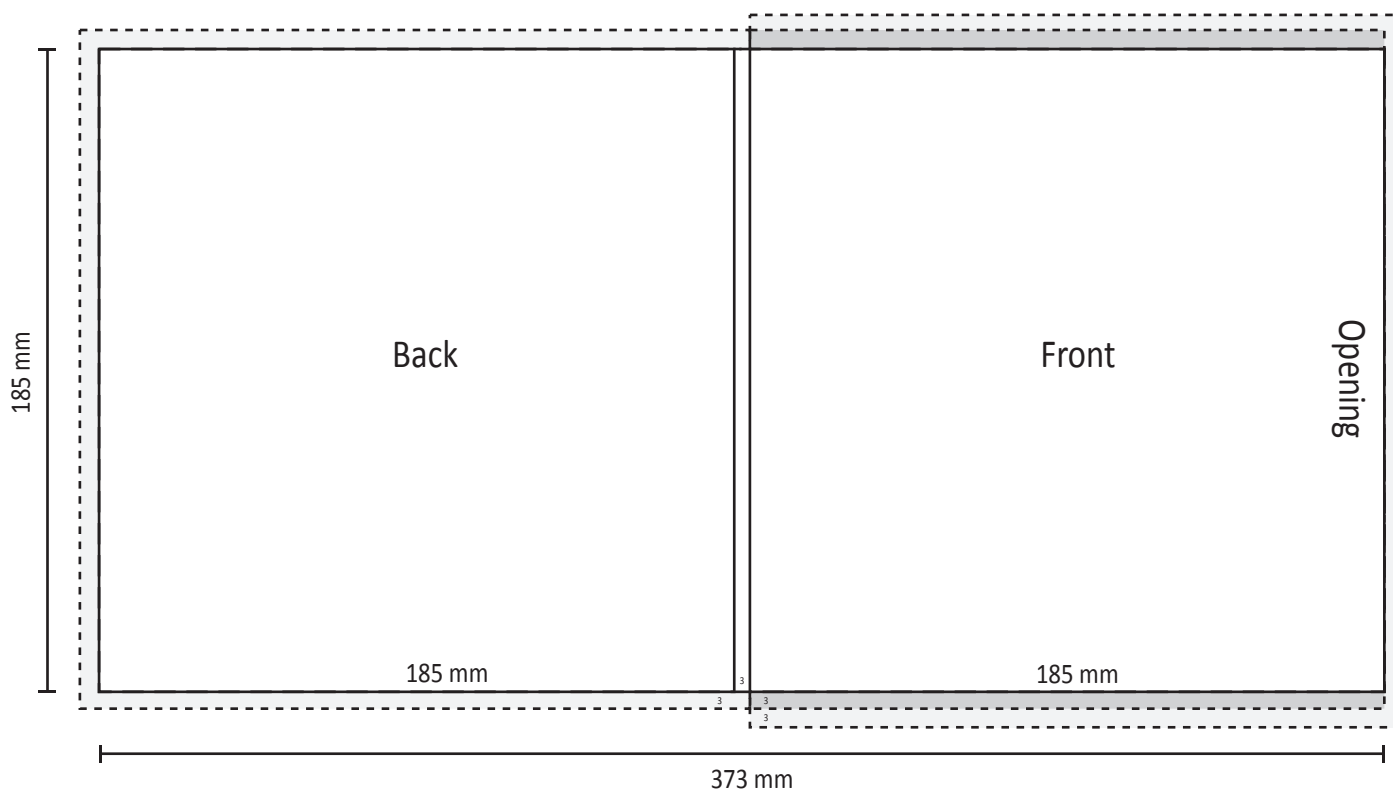
Document size incl. bleed: 376 x 191 mm

PDF measures: 376 x 191 mm

## LP Specifications

LP 7" sleeve with 3 mm spine

Opening beside



Format: 185 x 185 mm

Pages: 1

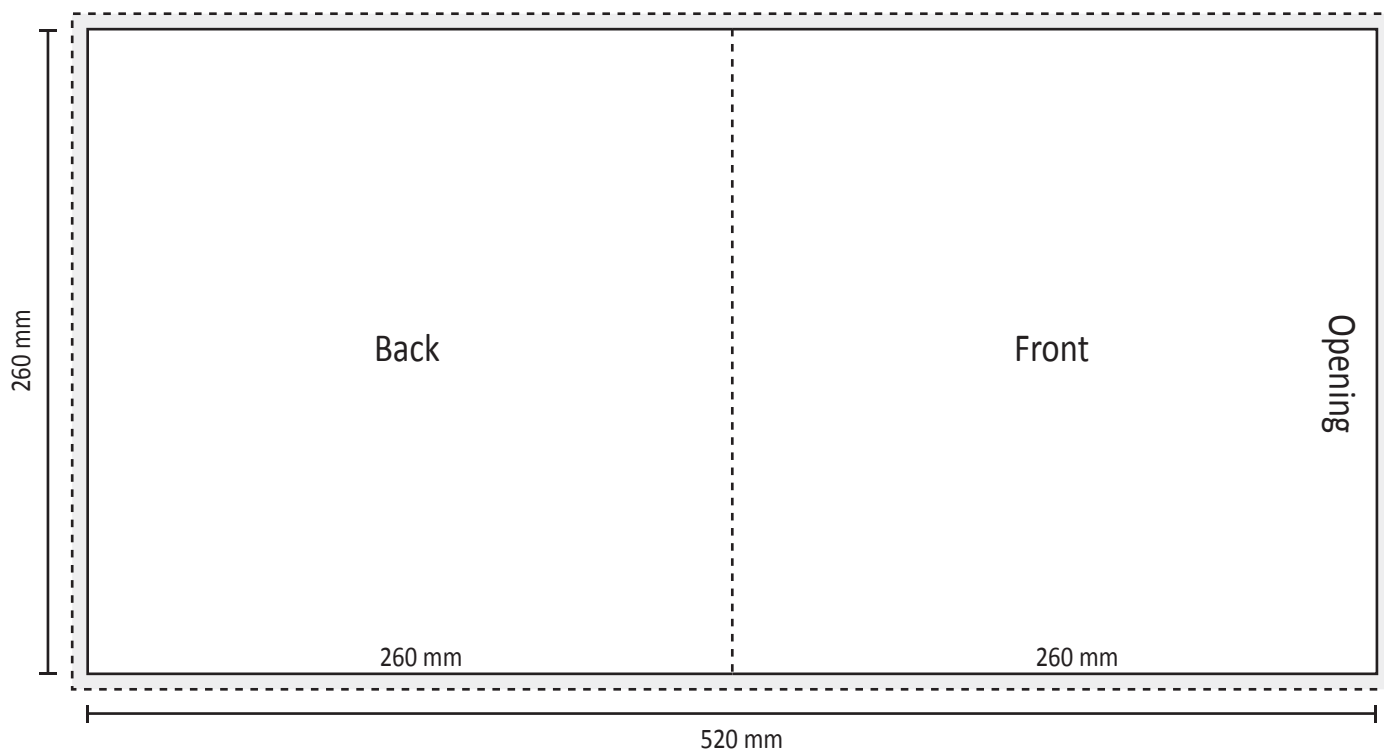
Bleed: 3 mm

Document size: 373 x 191 mm

Document size incl. bleed: 379 x 197 mm

PDF measures: 379 x 197 mm

LP Specifications  
LP 10" discobag  
Opening beside



Format: 260 x 260 mm

Pages: 1

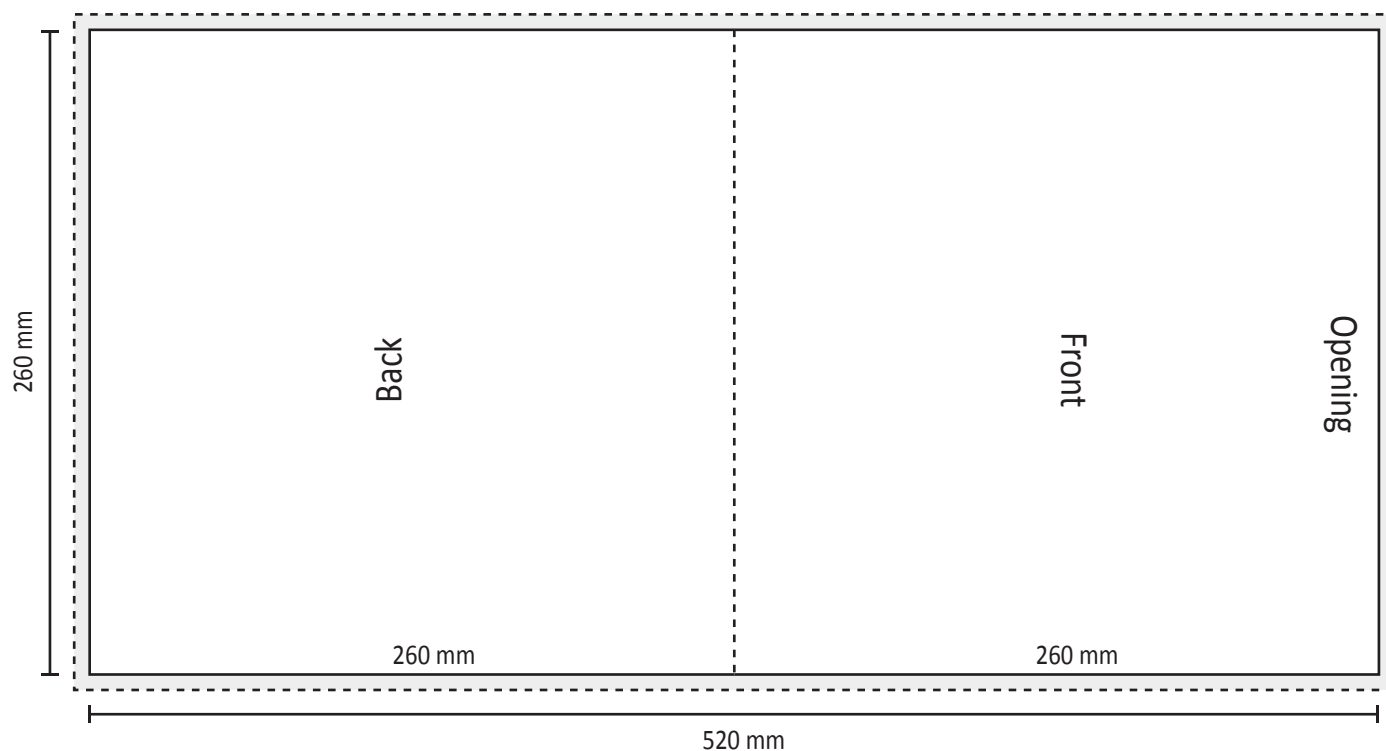
Bleed: 3 mm

Document size: 520 x 260 mm

Document size incl. bleed: 526 x 266 mm

PDF measures: 526 x 266 mm

LP Specifications  
LP 10" discobag  
Opening on top



Format: 260 x 260 mm

Pages: 1

Bleed: 3 mm

Document size: 520 x 260 mm

Document size incl. bleed: 526 x 266 mm

PDF measures: 526 x 266 mm

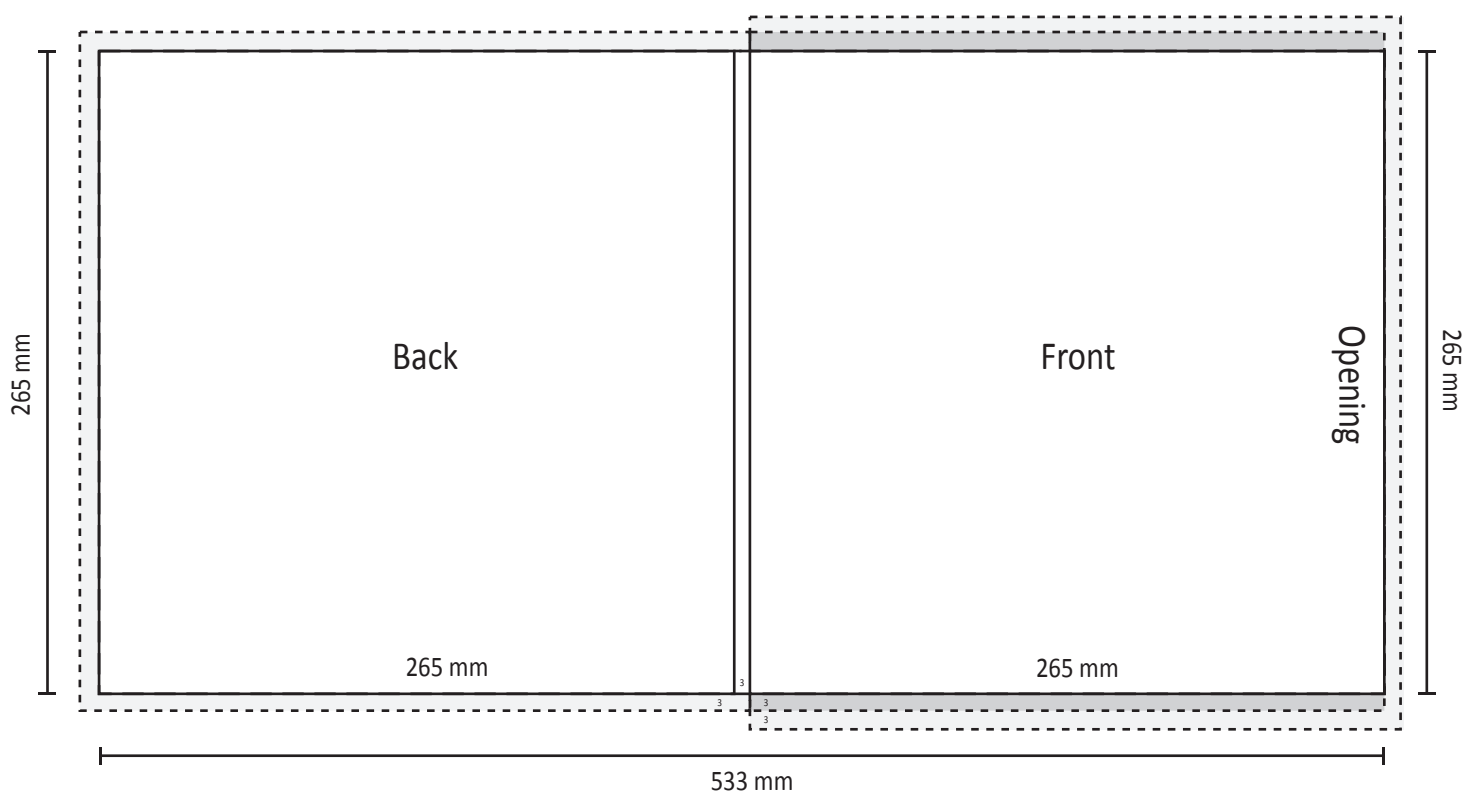


## LP Specifications

LP 10" sleeve with 3 mm spine

Opening beside

Specification innersleeve on request



Format: 265 x 265 mm

Pages: 1

Bleed: 3 mm

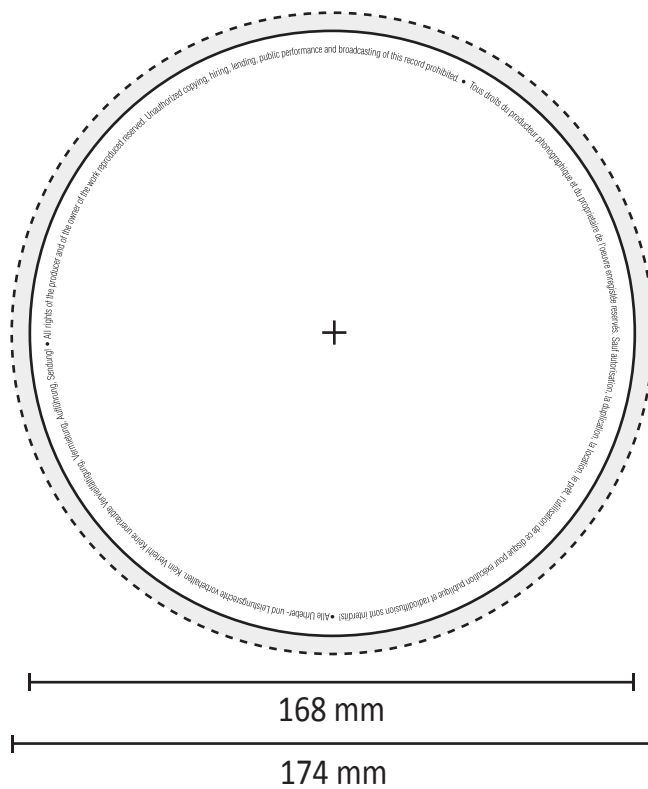
Document size: 533 x 271 mm

Document size incl. bleed: 539 x 277 mm

PDF measures: 539 x 277 mm

## LP Specifications

### LP 7" picture



Format: 168 x 168 mm

Pages: 2

Bleed: 3 mm

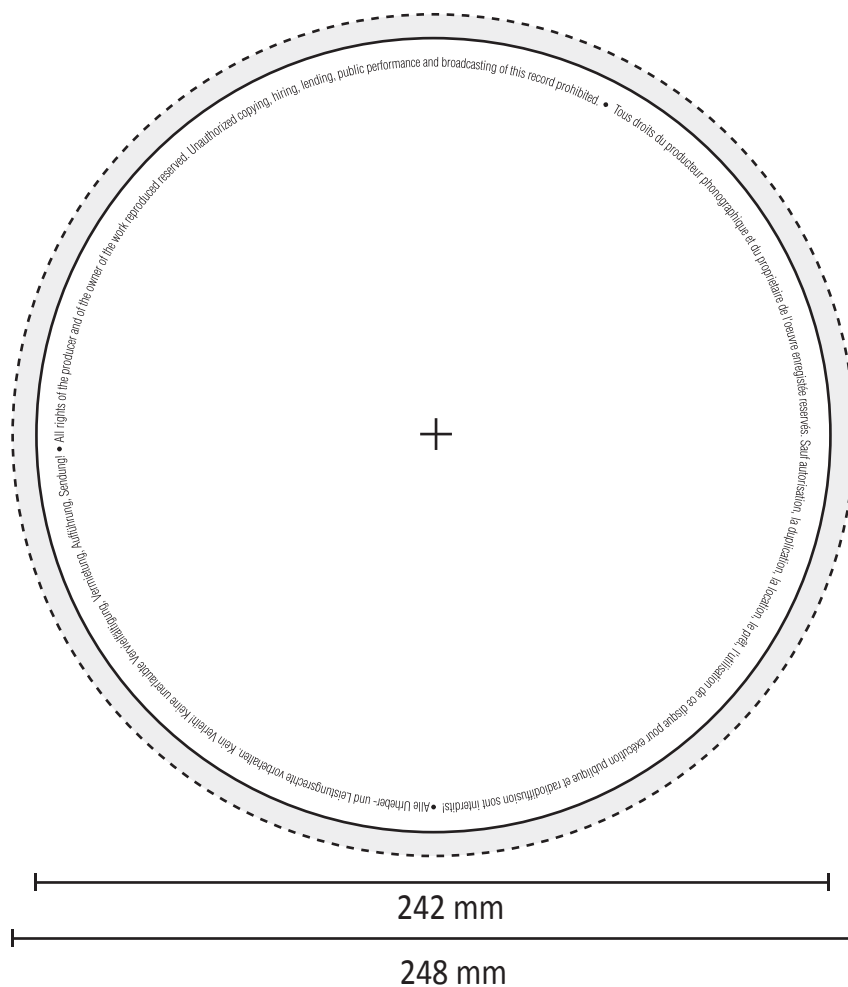
Document size: 168 x 168 mm

Document size incl. bleed: 174 x 174 mm

PDF measures: 174 x 174 mm

## LP Specifications

### LP 10" picture



Format: 242 x 242 mm

Pages: 2

Bleed: 3 mm

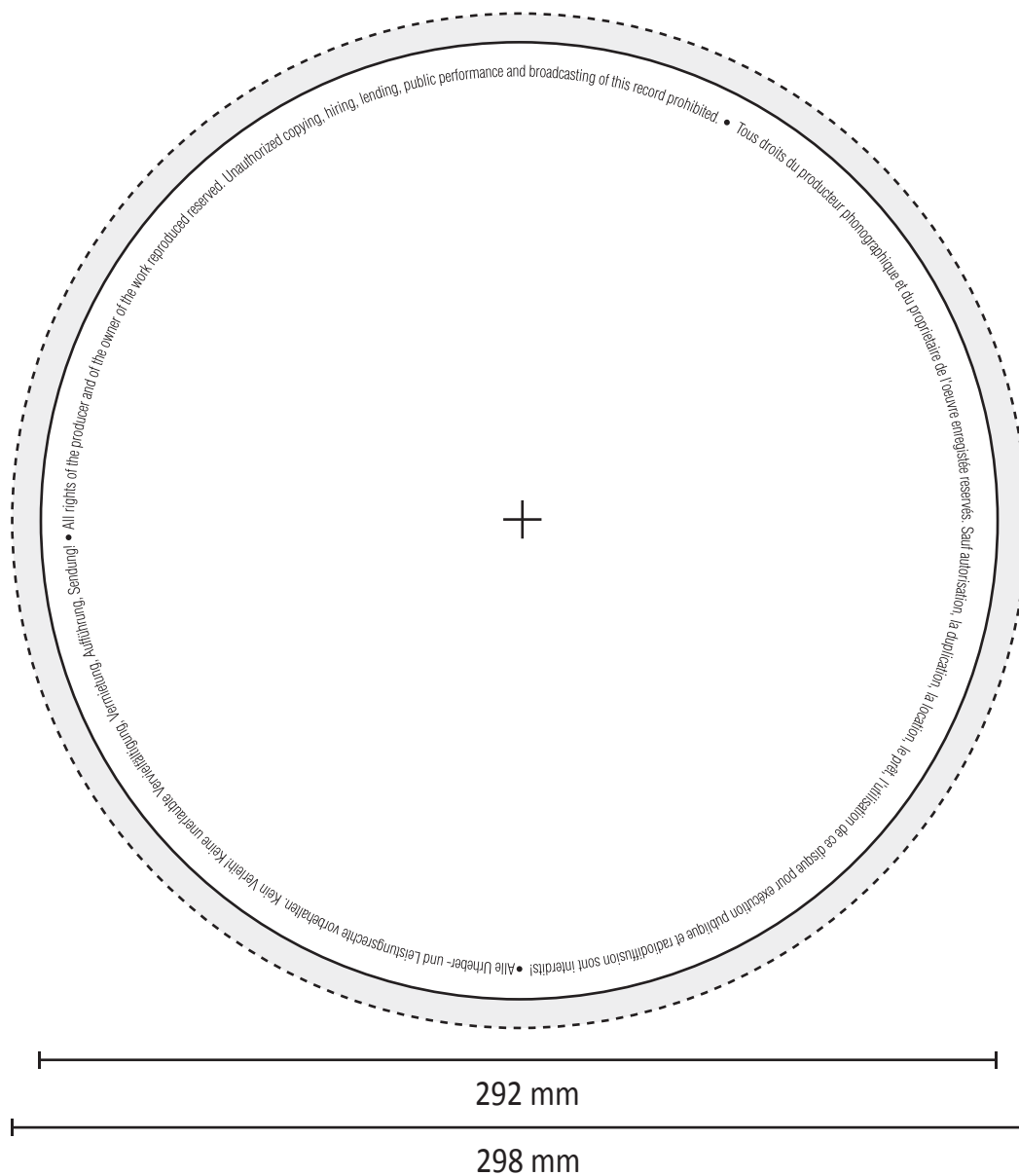
Document size: 242 x 242 mm

Document size incl. bleed: 248 x 248 mm

PDF measures: 248 x 248 mm

## LP Specifications

### LP 12" picture



Format: 292 x 292 mm

Pages: 2

Bleed: 3 mm

Document size: 292 x 292 mm

Document size incl. bleed: 298 x 298 mm

PDF measures: 298 x 298 mm